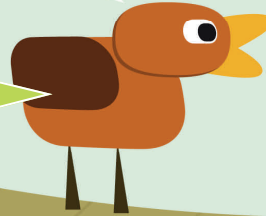


I read on **twitter** that CFS can **REFI** our loan and **LOWER** our payment!



Follow us  
@Twitter/CFSchicago

# RATES AS LOW AS 4.00%\*



## PROTECT YOUR NEST & LOWER YOUR MORTGAGE PAYMENT

[www.cfsmortgage.com](http://www.cfsmortgage.com)

Dear Homeowner:

Mortgage rates have dropped since your most recent closing. Chicago Financial Services will lock you into a **LOWER RATE** and **PAY FOR ALL YOUR CLOSING COSTS**. That's about a **\$1,700 savings to you**.\*

- Apply over the phone at **312-327-9979**.
- Send an email to [loans@cfsmortgage.com](mailto:loans@cfsmortgage.com)
- In person at 215 W. Superior St., 7th Floor Chicago, IL 60654.



**JDRF** Juvenile Diabetes Research Foundation International

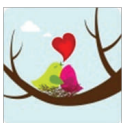
*dedicated to finding a cure*

A \$100 donation to the Juvenile Diabetes Research Foundation will be made at closing for your loan.

Chicago Financial Services has been providing mortgage services since 1990. We offer the best rates available for fixed and adjustable rate loans.\*\*

Rates are as low as 4.00%!\*

Don't hesitate, act now while rates are lower.



Thank you in advance.  
Philip Brilliant, Chicago Financial Services  
312-327-9979 [pbrilliant@cfsmortgage.com](mailto:pbrilliant@cfsmortgage.com)



\*Some restrictions may apply. Loan is a 5/1 ARM (Adjustable Rate Mortgage). The Annual Percentage Rate is 3.569%.  
\*\*Rates and terms may vary. \$300 appraisal fee required in advance.